

# EXTRA-N-LED

IP 66 /  zone 2, 22



FTZÚ 16 ATEX 0102X



**Application:** Dustproof lighting fixture EXTRA-N-LED with splash water resistance designed for lighting of areas with danger of explosion. The lighting fixture is certified by FTZU Ostrava-Radvanice (certificate type FTZU 16 ATEX 0102X).

**Ballast:** EP – electronic 220 – 240 V, 50/60 Hz, 220 – 240 V, 0 Hz DC

**Light source:** LED, 4000K, CRI +80, MacAdam3

**Housing:** Plastic material PC (polycarbonate), grey colour RAL 7035

**Diffuser:** PC (polycarbonate) opal

**Fastening:** Surface ceiling or wall mounting by means of two self-locking fastening brackets (standard equipment) or set of wall brackets - angle 45°, pole mounting via set of pole brackets, suspension by means of wire or cable suspenders.

**Connection:** Screwless three-pole terminal block, maximum diameter of wires 2.5 mm<sup>2</sup>

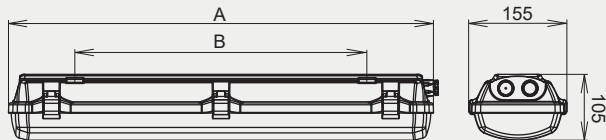
**Standard equipment:** 1pc EX plastic cable gland M20x1.5 (as a standard for diameter of cable 7-12mm), 1 pc EX plastic plug M20x1.5, 2 pcs stainless steel fastening bracket-AISI 304, stainless clips, double cable clip.

**Calculated lifetime – LED modules:** L80B10 ta30 – 70 000h, L70B10 ta30 – 100 000h

#### EXTRA-N-LED, MULTIEXTRA-N-LED, EXTRA-N-LED-Em

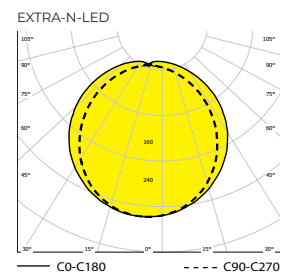
Ⓜ II 3G Ex nR IIC T6 Gc

Ⓜ II 3D Ex tc IIIC T80°C Dc



Order number	Name	Lighting fixture luminous flux (lm)	Power input (W)	Rated power output (lm/W)	Ta max (°C)	Dimensions of lighting fixture A (mm)	Mounting spacing B (mm)	Weight (kg)
<b>4000K</b>								
055660	EXTRA-N-LED-1250-218-G2-4K, IP66	1125	8	150	60	670	460	1,8
055661	EXTRA-N-LED-2500-218-G2-4K, IP66	2251	15	150	60	670	460	1,8
055662	EXTRA-N-LED-5000-218-G2-4K, IP66	4357	29	150	55	670	460	1,7
055663	EXTRA-N-LED-2500-236-G2-4K, IP66	2251	15	155	60	1280	880	3,1
055664	EXTRA-N-LED-5000-236-G2-4K, IP66	4503	29	155	60	1280	880	3,1
055665	EXTRA-N-LED-10000-236-G2-4K, IP66	8715	58	150	40	1280	880	3,2
055666	EXTRA-N-LED-3750-258-G2-4K, IP66	3664	24	154	55	1580	1000	3,6
055667	EXTRA-N-LED-7500-258-G2-4K, IP66	7238	47	154	55	1580	1000	3,6
055668	EXTRA-N-LED-12550-258-G2-4K, IP66	11172	74	151	45	1580	1000	3,8
055669	EXTRA-N-LED-16700-258-G2-4K, IP66	13730	94	146	40	1580	1000	3,8
055670	EXTRA-N-LED-20000-258-G2-4K, IP66	16311	115	142	40	1580	1000	3,8

Tolerance of luminous flux and power input of the lighting fixture +/- 10%



## Accessories on request



Suspended mounting	
001696	Wire suspension EXTRA



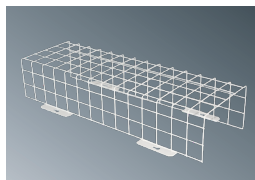
Suspended mounting	
051131	Cable suspension-EXTRA-2x (3m)



064643	Set of wall brackets - angle 45° EXTRA (2 pcs)
--------	--



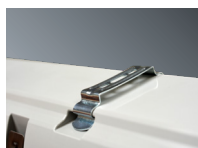
051157	Pole bracket EXTRA (for Ø 50 mm)
--------	----------------------------------



001748 LAK	Protective cage EXTRA 18W
001749 LAK	Protective cage EXTRA 36W
001750 LAK	Protective cage EXTRA 58W

Standard accessories M20		Accessories for armoured cable M20		Nickel-plated accessories M20	
008060	Plastic cable gland Ex M20x1.5	008052	Cable gland BIMED M20x1.5 ORION UNIVERSAL (8+/- 0.5Nm)	008092	Cable gland WISKA EMSKE20 M20x1.5 Ex-nickel-plated brass ( 8 Nm)
007047N	Flat sealing ring EPDM 27x18.5x1.5 mm	008091	Sealing plug WISKA EMVS20 M20x1.5 Ex-nickel-plated brass	008093	Nut WISKA EMMU20 M20x1.5 - nickel-plated brass
008090	Plastic sealing plug Ex M20x1.5	008093	Nut WISKA EMMU20 M20x1.5 -nickel-plated brass	008091	Sealing plug WISKA EMVS20 M20x1.5 Ex-nickel-plated brass
008097	Plastic nut WISKA EMUG 20 M20x1.5	007047N	Flat sealing ring EPDM 27x18.5x1.5 mm	007047N	Flat sealing ring EPDM 27x18.5x1.5 mm

## Lighting fixture detail



## On request

**DIM** – dimmable electronic ballast (DALI,DSI, 1-10V)

**GESIS** – possibility to equip lighting fixtures with connectors

**NANO** – lighting fixtures can be protected by special nano-layer (hydrophobic, oleophobic or antibacterial protection)

**EM-1/3** - non-maintained emergency lighting

**MULTI-1/3** - maintained emergency lighting

**2.7K-6.5K** - colour temperature

**1/3 F** - single-phase or three phase through wiring connection 2.5 mm<sup>2</sup>

Stadard order number	MULTI-1H	MULTI-3H	DALI	1F	3F
055660	055688	055695	055671	055660 1F 2,5MM2	055660 3F 2,5MM2
055661	055689	055696	055672	055661 1F 2,5MM2	055661 3F 2,5MM2
055662			055673	055662 1F 2,5MM2	055662 3F 2,5MM2
055663	055690	055697	055674	055663 1F 2,5MM2	055663 3F 2,5MM2
055664	055691	055698	055675	055664 1F 2,5MM2	055664 3F 2,5MM2
055665			055676	055665 1F 2,5MM2	055665 3F 2,5MM2
055666	055692	055699	055677	055666 1F 2,5MM2	055666 3F 2,5MM2
055667	055693	055700	055678	055667 1F 2,5MM2	055667 3F 2,5MM2
055668	055694	055701	055679	055668 1F 2,5MM2	055668 3F 2,5MM2
055669			055680	055669 1F 2,5MM2	055669 3F 2,5MM2
055670			055681	055670 1F 2,5MM2	055670 3F 2,5MM2

## EM

055682	EXTRA-N-LED-Em-500-218-G2-4K, IP66, 1h	055685	EXTRA-N-LED-Em-500-218-G2-4K, IP66, 3h
055683	EXTRA-N-LED-Em-500-236-G2-4K, IP66, 1h	055686	EXTRA-N-LED-Em-500-236-G2-4K, IP66, 3h
055684	EXTRA-N-LED-Em-500-258-G2-4K, IP66, 1h	055687	EXTRA-N-LED-Em-500-258-G2-4K, IP66, 3h

## Use of lighting fixtures in areas with danger of explosion

	Marking of external influences	Area classification	
		Marking	Directive
Danger of explosion of flammable dust	BE3N1	ZONE 22	ČSN EN 60079-14, ČSN EN 60079-10-2
Danger of explosion of flammable gases and vapours	BE3N2	ZONE 2	ČSN EN 60079-14, ČSN EN 60079-10-1