



SWITCH BOXES

JUNCTION BOXES



ISO 9001:2008
Certificate No: 34039



Switch Boxes

• Application

alfanar Switch Boxes are widely used in installation of wiring and accessories in residential, commercial and industrial buildings.

• Features

- Designed and manufactured to ensure adequate mechanical strength during installation and durability throughout service life
- Tested by SASO and meet the requirements of British Standards
- The lugs are tapped using an automatic gang tapping machine, making the threads very reliable and resistant to damage even after multiple use
- Knockouts can be easily removed with little effort even after installation on walls
- Made of hot-dipped galvanized steel sheet



7x7
With Brass Earth Terminal

Figure 1



7x7
With Steel Earth Terminal

Figure 2



7x7
With One Adjustable Lug
& Brass Earth Terminal

Figure 3



7x7
Without Earth Terminal

Figure 4

Switch boxes with coupler(s) are used for perfect alignment and to maintain a uniform gap between switches to give an elegant look.

Switch Boxes With Coupler(s)

1. Two-module : Two switch boxes (7x7x3.5) connected by special **alfanar** coupler (See figure 8)
2. Three-module : Three switch boxes (7x7x3.5) connected by special **alfanar** couplers (See figure 9)
3. Four-module : Four switch boxes (7x7x3.5) connected by special **alfanar** couplers (See figure 10)

Switch Boxes



7x14
With Brass Earth Terminal



7x14
Without Earth
Terminal

• Technical Specifications

Item	Description
Standard :	BS 4662
Voltage Rating :	120-440 V AC 50/60 Hz
Degree of protection :	IP40 (NEMA 1)
Material :	Hot-Dipped Galvanized Steel Sheet (Corrosion Resistant)
Steel Thickness :	0.9mm / 1.1mm
Knockouts :	Ø 20.5 / Ø 26.5
Features / Varieties :	1. With Brass Earth Terminal 2. With Steel Earth Terminal 3. With Adjustable Lug 4. With Brass Earth Terminal & Adjustable Lug 5. With Coupler(s) 6. Without Earth Terminal 7. With Provision for Earth
Sizes :	1. 72(h) x 72(w) x 35(d)mm 2. 72(h) x 72(w) x 47(d)mm 3. 72(h) x 132(w) x 35(d)mm 4. 72(h) x 132(w) x 47(d)mm



7x7

With Provision For Earth
Figure 7



Figure 8



Figure 9

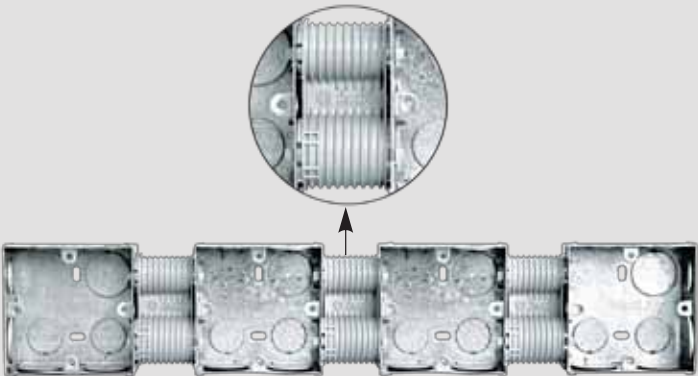


Figure 10

Switch Boxes

Available Varieties & Ordering Details

SWITCH BOX (72x72x35mm)

SL.NO.	DESCRIPTION	ACCESSORY	MARKING	ITEM CODE
1	SWITCH BOX 7X7X0.9 mm	W/O EARTH	MADE IN KSA	30-010707
2	SWITCH BOX 7X7X0.9 mm	STEEL EARTH	MADE IN KSA	30-020707
3	SWITCH BOX 7X7X0.9 mm	BRASS EARTH	MADE IN KSA	30-030707
4	SWITCH BOX 7X7X0.9 mm	WITH ADJ. LUG & W/O EARTH	MADE IN KSA	30-130707
5	SWITCH BOX 7X7X0.9 mm	BE. ADJ. LUG	MADE IN KSA	30-060707
6	SWITCH BOX 7X7X1.1 mm	W/O EARTH	MADE IN KSA	30-070707
7	SWITCH BOX 7X7X1.1 mm	STEEL EARTH	MADE IN KSA	30-080707
8	SWITCH BOX 7X7X1.1 mm	BRASS EARTH	MADE IN KSA	30-090707
9	SWITCH BOX 7X7X1.1mm	WITH ADJ. LUG & W/O EARTH	MADE IN KSA	30-140707
10	SWITCH BOX 7X7X1.1 mm	BE. ADJ. LUG	MADE IN KSA	30-120707
11	SWITCH BOX 7X7X0.9 mm	PROV.FOR EARTH (RAISED PORTION)	MADE IN KSA	30-P10707
12	SWITCH BOX 7X7X1.1 mm	PROV.FOR EARTH (RAISED PORTION)	MADE IN KSA	30-P70707
13	SWITCH BOX 7X7X0.9 mm	PROV. FOR EARTH (RAISED PORTION) *	MADE IN KSA	30-PS10707
14	SWITCH BOX 7X7X1.1 mm	PROV. FOR EARTH (RAISED PORTION) *	MADE IN KSA	30-PS70707
15	SWITCH BOX 7X7X1.1 mm	W/O EARTH	BRITISH SPEC	30-BS70707
16	SWITCH BOX 7X7X1.1 mm	STEEL EARTH	BRITISH SPEC	30-BS80707
17	SWITCH BOX 7X7X1.1 mm	BRASS EARTH	BRITISH SPEC	30-BS90707
18	SWITCH BOX 7X7X1.1 mm	WITH ADJ. LUG & W/O EARTH	BRITISH SPEC	30-BS140707
19	SWITCH BOX 7X7X1.1 mm	BE. ADJ. LUG	BRITISH SPEC	30-BS120707

SWITCH BOX (72x132x35mm)

SL.NO.	DESCRIPTION	ACCESSORY	MARKING	ITEM CODE
1	SWITCH BOX 7X14X0.9 mm	W/O EARTH	MADE IN KSA	30-010714
2	SWITCH BOX 7X14X0.9 mm	STEEL EARTH	MADE IN KSA	30-020714
3	SWITCH BOX 7X14X0.9 mm	BRASS EARTH	MADE IN KSA	30-030714
4	SWITCH BOX 7X14X0.9 mm	WITH ADJ. LUG & W/O EARTH	MADE IN KSA	30-130714
5	SWITCH BOX 7X14X0.9 mm	BE. ADJ. LUG	MADE IN KSA	30-060714
6	SWITCH BOX 7X14X1.1 mm	W/O EARTH	MADE IN KSA	30-070714
7	SWITCH BOX 7X14X1.1 mm	STEEL EARTH	MADE IN KSA	30-080714
8	SWITCH BOX 7X14X1.1mm	BRASS EARTH	MADE IN KSA	30-090714
9	SWITCH BOX 7X14X1.1 mm	WITH ADJ. LUG & W/O EARTH	MADE IN KSA	30-140714
10	SWITCH BOX 7X14X1.1 mm	BE. ADJ. LUG	MADE IN KSA	30-120714
11	SWITCH BOX 7X14X0.9 mm	PROV.FOR EARTH (RAISED PORTION)	MADE IN KSA	30-P10714
12	SWITCH BOX 7X14X1.1 mm	PROV.FOR EARTH (RAISED PORTION)	MADE IN KSA	30-P70714
13	SWITCH BOX 7X14X0.9 mm	PROV. FOR EARTH (RAISED PORTION) *	MADE IN KSA	30-PS10714
14	SWITCH BOX 7X14X1.1 mm	PROV. FOR EARTH (RAISED PORTION) *	MADE IN KSA	30-PS70714
15	SWITCH BOX 7X14X1.1 mm	W/O EARTH	BRITISH SPEC	30-BS70714
16	SWITCH BOX 7X14X1.1 mm	STEEL EARTH	BRITISH SPEC	30-BS80714
17	SWITCH BOX 7X14X1.1 mm	BRASS EARTH	BRITISH SPEC	30-BS90714
18	SWITCH BOX 7X14X1.1 mm	WITH ADJ. LUG & W/O EARTH	BRITISH SPEC	30-BS140714
19	SWITCH BOX 7X14X1.1 mm	BE. ADJ. LUG	BRITISH SPEC	30-BS120714

* All the knockouts are of Ø 20.5mm

SWITCH BOX (72X72X47mm)

SL.NO.	DESCRIPTION	ACCESSORY	MARKING	ITEM CODE
1	SWITCH BOX 7X7X0.9 mm	W/O EARTH	MADE IN KSA	30-200707
2	SWITCH BOX 7X7X0.9 mm	STEEL EARTH	MADE IN KSA	30-220707
3	SWITCH BOX 7X7X0.9 mm	BRASS EARTH	MADE IN KSA	30-230707
4	SWITCH BOX 7X7X0.9 mm	WITH ADJ. LUG & W/O EARTH	MADE IN KSA	30-270707
5	SWITCH BOX 7X7X0.9 mm	BE. ADJ. LUG	MADE IN KSA	30-260707
6	SWITCH BOX 7X7X1.1 mm	W/O EARTH	MADE IN KSA	30-300707
7	SWITCH BOX 7X7X1.1 mm	STEEL EARTH	MADE IN KSA	30-320707
8	SWITCH BOX 7X7X1.1 mm	BRASS EARTH	MADE IN KSA	30-330707
9	SWITCH BOX 7X7X1.1 mm	WITH ADJ. LUG & W/O EARTH	MADE IN KSA	30-370707
10	SWITCH BOX 7X7X1.1 mm	BE. ADJ. LUG	MADE IN KSA	30-360707

SWITCH BOX (72X132X47mm)

SL.NO.	DESCRIPTION	ACCESSORY	MARKING	ITEM CODE
1	SWITCH BOX 7X14X0.9 mm	W/O EARTH	MADE IN KSA	30-200714
2	SWITCH BOX 7X14X0.9 mm	STEEL EARTH	MADE IN KSA	30-220714
3	SWITCH BOX 7X14X0.9 mm	BRASS EARTH	MADE IN KSA	30-230714
4	SWITCH BOX 7X14X0.9 mm	WITH ADJ. LUG & W/O EARTH	MADE IN KSA	30-270714
5	SWITCH BOX 7X14X0.9 mm	BE. ADJ. LUG	MADE IN KSA	30-260714
6	SWITCH BOX 7X14X1.1 mm	W/O EARTH	MADE IN KSA	30-300714
7	SWITCH BOX 7X14X1.1 mm	STEEL EARTH	MADE IN KSA	30-320714
8	SWITCH BOX 7X14X1.1 mm	BRASS EARTH	MADE IN KSA	30-330714
9	SWITCH BOX 7X14X1.1 mm	WITH ADJ. LUG & W/O EARTH	MADE IN KSA	30-370714
10	SWITCH BOX 7X14X1.1 mm	BE. ADJ. LUG	MADE IN KSA	30-360714

SWITCH BOX WITH COUPLER(S) 72X72X35mm

SL.NO.	DESCRIPTION	ACCESSORY	MARKING	ITEM CODE
1	2 SWITCH BOXES 7X7X0.9 mm	W/O EARTH	MADE IN KSA	30-0107072C
2	3 SWITCH BOXES 7X7X0.9 mm	W/O EARTH	MADE IN KSA	30-0107073C
3	4 SWITCH BOXES 7X7X0.9 mm	W/O EARTH	MADE IN KSA	30-0107074C



durability



durable /djuereb(e)l adj. **1** capable of lasting; hard wearing. **2** ,staying in good condition for along time even if used alot

Junction Boxes

• Application

alfanar Junction Boxes are widely used in electrical wiring installations in domestic, commercial and industrial buildings.

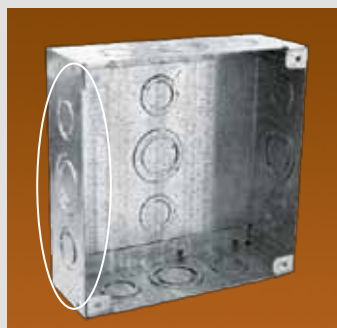
• Features

- Designed and manufactured to ensure adequate mechanical strength at the time of installation and durability throughout service life
- Designed for Surface and Flush mounting applications
- Rounded corner covers, rounded lugs and quality cover fixing screws
- Made of hot-dipped galvanized steel sheet
- Boxes have ample number of precut knockouts to accommodate various standard glands



Rounded Corner Cover

Figure 11



Double & Triple Knockouts

Figure 12



Rounded Lugs

Figure 13

Junction Boxes

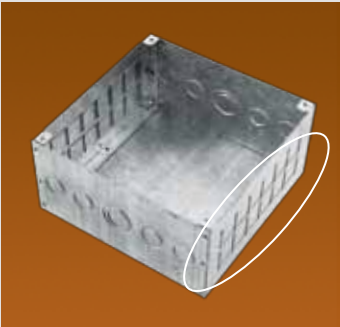
• Technical Specifications

Item	Description
Voltage Rating	120-440 V AC 50/60 Hz
Degree of protection	IP40 (NEMA 1)
Material	Hot-Dipped Galvanized Steel Sheet (Corrosion Resistant)
Steel Thickness	0.9mm
Knockouts	Double Knockout $\varnothing 19/25$ Triple Knockout $\varnothing 23/28/35$ 26x26mm rectangular knockouts for accommodating cutouts of various sizes as per requirement
Features / Varieties	With steel earth terminals



Quality Cover Screws

Figure 14



With Rectangular Knockouts

Figure 15



With Rectangular Knockouts (Painted)

Figure 16

Junction Boxes

Available Varieties & Ordering Details

JUNCTION BOXES (55mm Depth)

SL.NO.	DESCRIPTION	MARKING	ITEM CODE
1	J.BOX 100X100X55 mm	MADE IN KSA	31-011010
2	J.BOX 150X150X55 mm	MADE IN KSA	31-011515
3	J.BOX 200X200X55 mm	MADE IN KSA	31-012020
4	J.BOX 250X250X55 mm	MADE IN KSA	31-012525
5	J.BOX 300X300X55 mm	MADE IN KSA	31-013030
6	J.BOX 350X350X55 mm	MADE IN KSA	31-013535
7	J.BOX 450X450X55 mm	MADE IN KSA	31-014545
8	J.BOX 100X100X55 mm WITH STEEL EARTH	MADE IN KSA	31-011010SE
9	J.BOX 150X150X55 mm WITH STEEL EARTH	MADE IN KSA	31-011515SE

JUNCTION BOXES (75mm Depth)

SL.NO.	DESCRIPTION	MARKING	ITEM CODE
1	J.BOX 100X100X75 mm	MADE IN KSA	31-021010
2	J.BOX 150X150X75 mm	MADE IN KSA	31-021515
3	J.BOX 200X200X75 mm	MADE IN KSA	31-022020
4	J.BOX 250X250X75 mm	MADE IN KSA	31-022525
5	J.BOX 300X300X75 mm	MADE IN KSA	31-023030
6	J.BOX 350X350X75 mm	MADE IN KSA	31-023535
7	J.BOX 450X450X75 mm	MADE IN KSA	31-024545

JUNCTION BOXES (100mm Depth)

SL.NO.	DESCRIPTION	MARKING	ITEM CODE
1	J.BOX 100X100X100 mm	MADE IN KSA	31-031010
2	J.BOX 150X150X100 mm	MADE IN KSA	31-031515
3	J.BOX 200X200X100 mm	MADE IN KSA	31-032020
4	J.BOX 250X250X100 mm	MADE IN KSA	31-032525
5	J.BOX 300X300X100 mm	MADE IN KSA	31-033030
6	J.BOX 350X350X100 mm	MADE IN KSA	31-033535
7	J.BOX 450X450X100 mm	MADE IN KSA	31-034545
8	J.BOX 300X200X100 mm	MADE IN KSA	31-032010

JUNCTION BOXES (100 mm Depth with Rectangular knockouts)

SL.NO.	DESCRIPTION	MARKING	ITEM CODE
1	J.BOX 100X100X100 mm	MADE IN KSA	31-031010R
2	J.BOX 150X150X100 mm	MADE IN KSA	31-031515R
3	J.BOX 200X200X100 mm	MADE IN KSA	31-032020R
4	J.BOX 250X250X100 mm	MADE IN KSA	31-032525R
5	J.BOX 300X300X100 mm	MADE IN KSA	31-033030R
6	J.BOX 350X350X100 mm	MADE IN KSA	31-033535R
7	J.BOX 450X450X100 mm	MADE IN KSA	31-034545R

JUNCTION BOXES (100 mm Depth with Rectangular knockouts painted RAL7035)

SL.NO.	DESCRIPTION	MARKING	ITEM CODE
1	J.BOX 100X100X100 mm	MADE IN KSA	31-031010RP
2	J.BOX 150X150X100 mm	MADE IN KSA	31-031515RP
3	J.BOX 200X200X100 mm	MADE IN KSA	31-032020RP
4	J.BOX 250X250X100 mm	MADE IN KSA	31-032525RP
5	J.BOX 300X300X100 mm	MADE IN KSA	31-033030RP
6	J.BOX 350X350X100 mm	MADE IN KSA	31-033535RP
7	J.BOX 450X450X100 mm	MADE IN KSA	31-034545RP



CERTIFICATION

alfanar products are approved by:

SEC
Saudi Electric Company

Saudi Aramco
Saudi Arabian Oil Company

SABIC
Saudi Basic Industries Corporation

Royal Commission For Jubail And Yanbu

SASO
Saudi Arabian Standards Organization

Several Ministries, Universities And Governmental Organizations In Saudi Arabia

Abu Dhabi Water and Electricity Board

Ministry Of Electricity, Bahrain

State Electricity Board, Qatar

**Public Electricity Corporation-
Ministry Of Electricity, Yemen**

OUR OBJECTIVE

**WE REACH EXACTING
STANDARDS IN THE
SAFETY AND
DISTRIBUTION OF
POWER AND GO WELL
BEYOND A CUSTOMER'S
EXPECTATIONS.
THIS IS DONE BY
FOCUSING OUR
TECHNOLOGY AND
EXPERTISE ON THE
ULTIMATE REWARD
WE CAN GET, COMPLETE
SATISFACTION OF
OUR CUSTOMERS.**



QUALITY POLICY

The Quality Policy of alfanar is, to:

- Provide products conforming to governing standards and of consistent quality
- Excel in all our operations to achieve customers' satisfaction for products and services through continual improvement
- Develop and maintain a motivated team of competent employees and vendors
- Redefine and execute new processes/systems that meet market requirements.



alfanar PRODUCTS

- **Switch and Socket Boxes**
- **Junction Boxes**
- **Metal Enclosures IP65**
- **Stainless Steel Enclosures NEMA-4x**
- **Telephone Enclosures**
- **Circuit Breaker Enclosures**
- **Busbar Chamber With Multiple Outlets**
- **Modular Enclosures**
- **Load Centers**
 - **NEMA Type LA Load Centers**
 - **IEC Type LD Load Centers**
 - **Split Busbar Units Type LAS/ LDS Load Centers**
 - **Raysan Load Centers**
 - **ALF Load Centers**
- **MCCB Distribution Boards**
- **Pump Control Panels**
- **Motor Control Centers**
- **LV Switchboards up to 6300A, Tested For 100KA - 1 sec Short Circuit Withstand**
- **Package Substations**
- **Control and Automation Panels**
- **Relay and Control Panels**
- **Medium Voltage Switchgears**
- **Pole Mounted Metering Structures**
- **AC/DC Panels up to 5000A , Tested For 85KA - 1 sec Short Circuit Withstand**
- **Extendable and Non-Extendable Ring Main Units**



K.S.A. Toll Free: 800 124 1333
www.alfanar.com

As improvement of **alfanar** products is an ongoing process, technical specifications and other details shown in this brochure may change from time to time